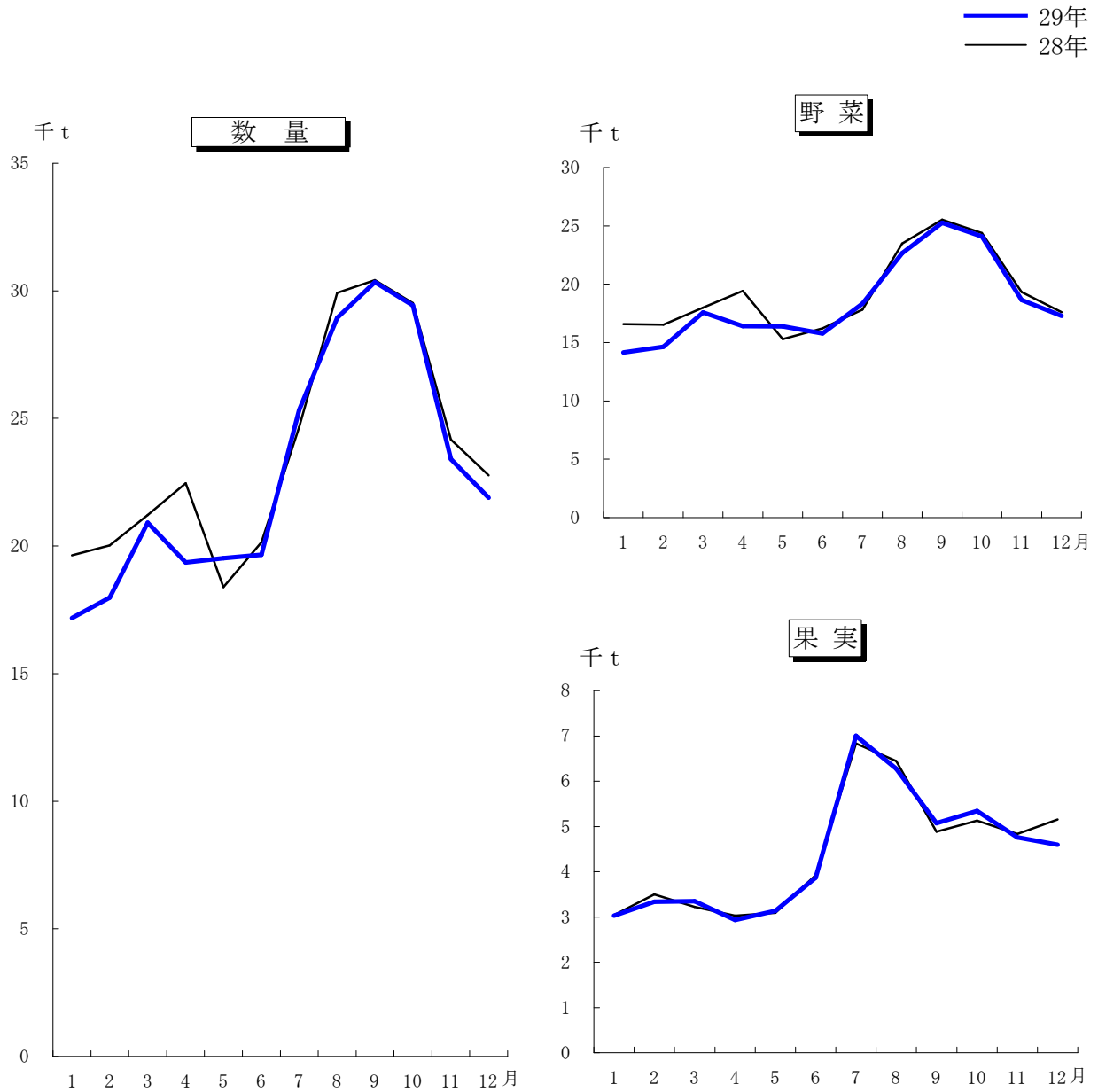


第3図 青果物の月別取扱数量推移



月別取扱数量

(単位：t)

区分	月平均	1	2	3	4	5	6	7	8	9	10	11	12	
総数	H27	25,122	19,925	19,957	20,662	19,937	18,413	21,288	26,885	32,300	35,128	36,782	25,493	24,699
	H28	23,610	19,632	20,027	21,208	22,464	18,393	20,141	24,663	29,923	30,418	29,518	24,166	22,766
	H29	22,827	17,176	17,977	20,913	19,355	19,525	19,656	25,326	28,937	30,338	29,428	23,401	21,891
野菜	H27	20,353	16,311	16,199	17,086	16,634	15,047	16,807	19,558	25,760	29,691	30,864	20,771	19,506
	H28	19,187	16,591	16,529	17,983	19,436	15,303	16,213	17,832	23,481	25,534	24,392	19,332	17,613
	H29	18,435	14,148	14,639	17,567	16,419	16,391	15,788	18,321	22,658	25,264	24,086	18,645	17,293
果実	H27	4,769	3,614	3,758	3,576	3,303	3,366	4,481	7,327	6,540	5,437	5,918	4,722	5,193
	H28	4,423	3,041	3,498	3,225	3,028	3,090	3,928	6,831	6,442	4,884	5,126	4,834	5,153
	H29	4,392	3,028	3,338	3,346	2,936	3,134	3,868	7,005	6,279	5,074	5,342	4,756	4,598