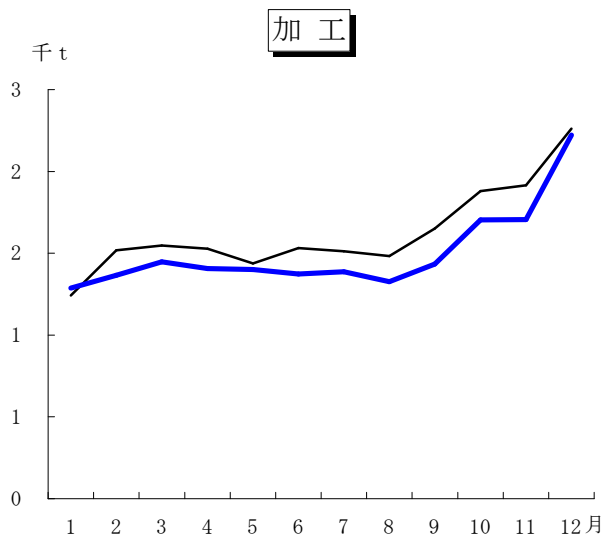
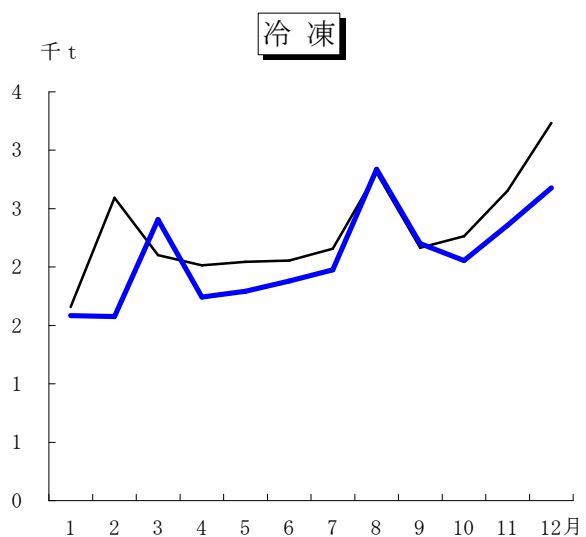
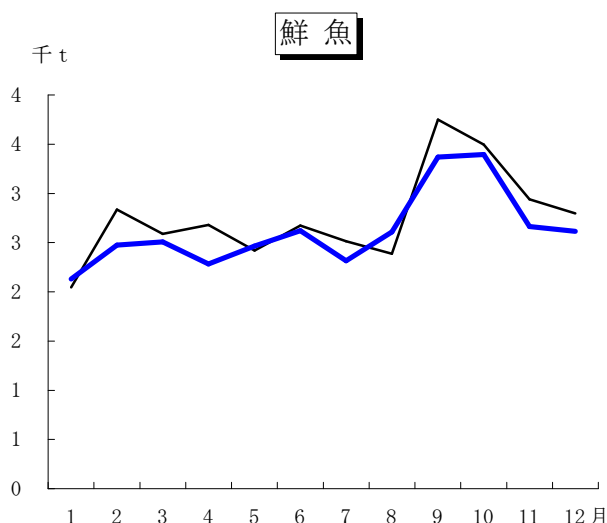
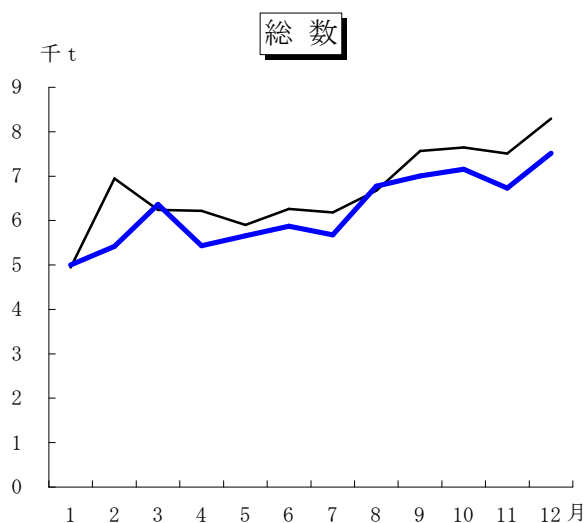


### 第3図 水産物の月別取扱数量推移

— 29年  
— 28年



月別取扱数量

(単位：t)

区分		月平均	1	2	3	4	5	6	7	8	9	10	11	12
総数	H27	7,519	6,221	6,913	6,999	6,260	6,063	6,817	6,943	8,372	9,043	8,760	7,770	10,064
	H28	6,698	4,946	6,945	6,238	6,220	5,902	6,262	6,185	6,674	7,565	7,642	7,508	8,291
	H29	6,216	5,002	5,416	6,364	5,431	5,660	5,873	5,679	6,772	7,005	7,154	6,727	7,514
鮮介魚類	H27	2,946	2,562	2,324	2,284	2,454	2,497	2,741	2,543	2,989	4,522	4,117	3,075	3,248
	H28	2,760	2,047	2,835	2,588	2,678	2,418	2,675	2,515	2,386	3,749	3,496	2,940	2,797
	H29	2,620	2,130	2,474	2,508	2,282	2,466	2,620	2,315	2,609	3,368	3,395	2,664	2,614
冷魚介凍類	H27	2,819	2,175	3,072	2,970	2,168	2,014	2,405	2,664	3,811	2,698	2,678	2,769	4,396
	H28	2,312	1,657	2,593	2,102	2,014	2,046	2,055	2,157	2,805	2,166	2,265	2,653	3,233
	H29	2,091	1,585	1,576	2,408	1,743	1,793	1,880	1,977	2,837	2,202	2,056	2,357	2,677
加品工類	H27	1,754	1,484	1,517	1,745	1,638	1,552	1,671	1,736	1,572	1,823	1,965	1,926	2,420
	H28	1,626	1,242	1,517	1,548	1,528	1,438	1,532	1,513	1,483	1,650	1,881	1,915	2,261
	H29	1,505	1,287	1,366	1,448	1,406	1,401	1,373	1,387	1,326	1,435	1,703	1,706	2,223