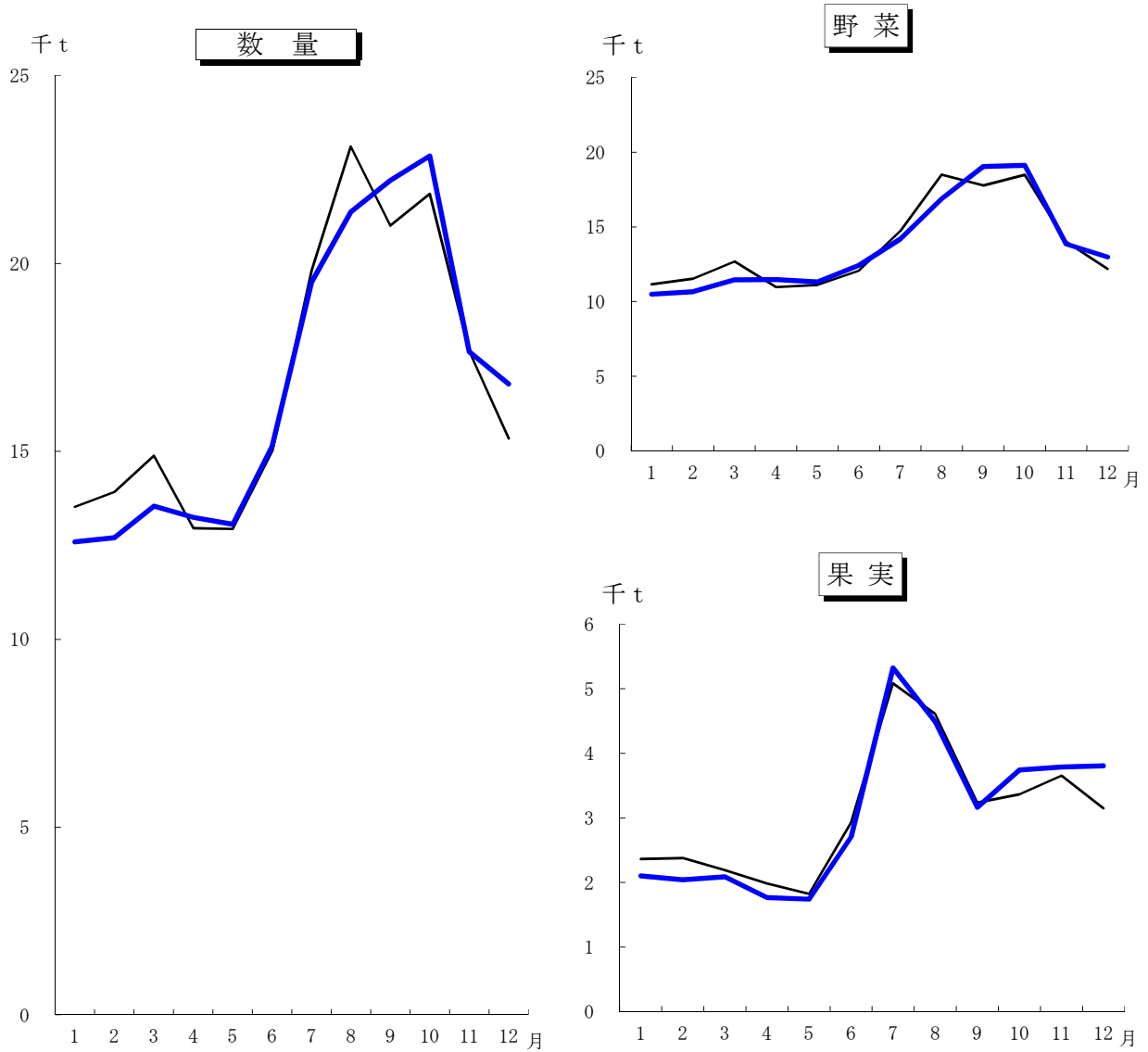


第3図 青果物の月別取扱数量推移

— 7年
— 6年



月別取扱数量

(単位：t)

| 区分 | | 月平均 | 1 | 2 | 3 | 4 | 5 | 6 | 7 | 8 | 9 | 10 | 11 | 12 |
|----|-----|--------|--------|--------|--------|--------|--------|--------|--------|--------|--------|--------|--------|--------|
| 総数 | R 5 | 17,553 | 14,400 | 14,877 | 15,427 | 14,520 | 14,259 | 16,332 | 20,783 | 20,499 | 21,074 | 21,638 | 19,156 | 17,665 |
| | R 6 | 16,836 | 13,525 | 13,918 | 14,881 | 12,955 | 12,935 | 15,003 | 19,821 | 23,112 | 21,012 | 21,857 | 17,675 | 15,340 |
| | R 7 | 16,725 | 12,592 | 12,703 | 13,544 | 13,245 | 13,061 | 15,148 | 19,514 | 21,373 | 22,210 | 22,864 | 17,654 | 16,793 |
| 野菜 | R 5 | 14,149 | 11,762 | 12,146 | 12,761 | 12,397 | 12,053 | 13,162 | 14,839 | 16,151 | 17,782 | 17,828 | 15,202 | 13,704 |
| | R 6 | 13,772 | 11,162 | 11,538 | 12,694 | 10,972 | 11,110 | 12,070 | 14,737 | 18,503 | 17,776 | 18,493 | 14,021 | 12,190 |
| | R 7 | 13,662 | 10,491 | 10,662 | 11,458 | 11,479 | 11,320 | 12,439 | 14,190 | 16,881 | 19,045 | 19,123 | 13,867 | 12,984 |
| 果実 | R 5 | 3,404 | 2,638 | 2,731 | 2,666 | 2,123 | 2,206 | 3,170 | 5,944 | 4,348 | 3,292 | 3,810 | 3,954 | 3,961 |
| | R 6 | 3,064 | 2,363 | 2,380 | 2,187 | 1,983 | 1,825 | 2,933 | 5,084 | 4,609 | 3,236 | 3,364 | 3,654 | 3,150 |
| | R 7 | 3,063 | 2,101 | 2,041 | 2,086 | 1,766 | 1,741 | 2,709 | 5,324 | 4,492 | 3,165 | 3,741 | 3,787 | 3,809 |