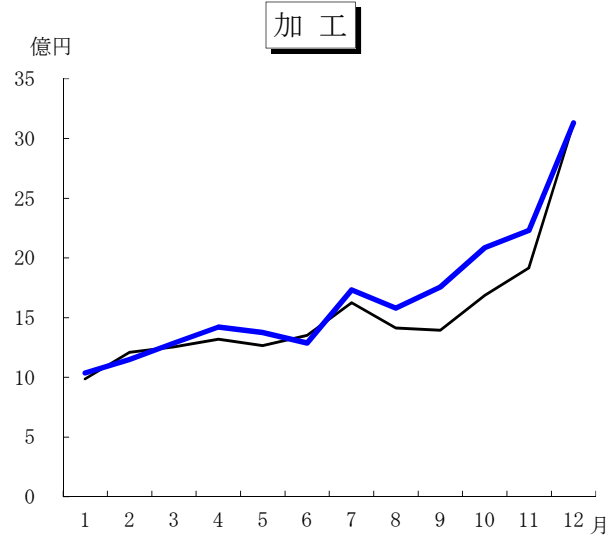
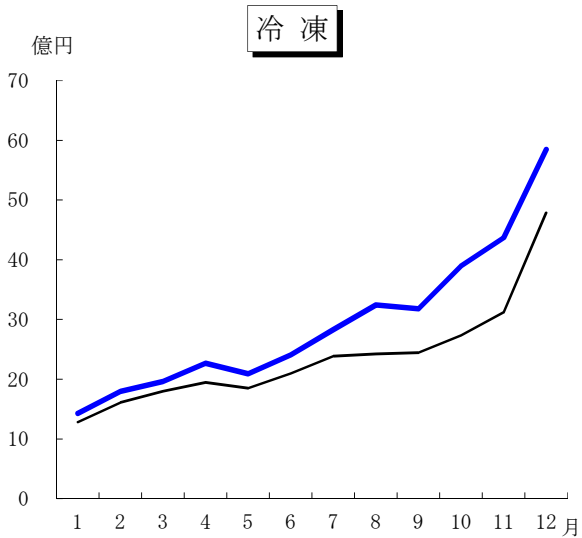
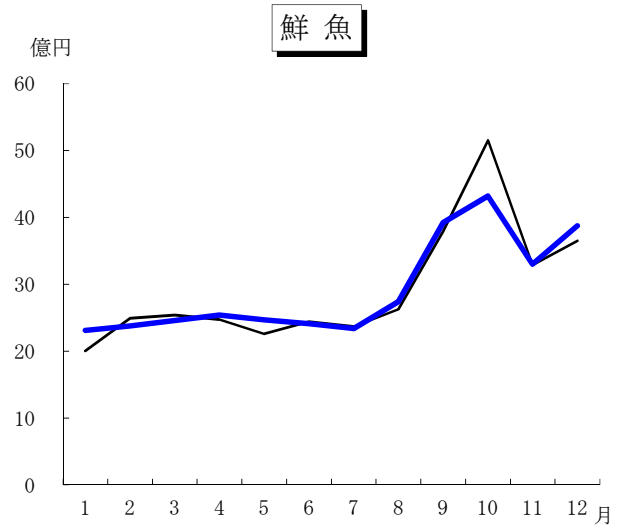
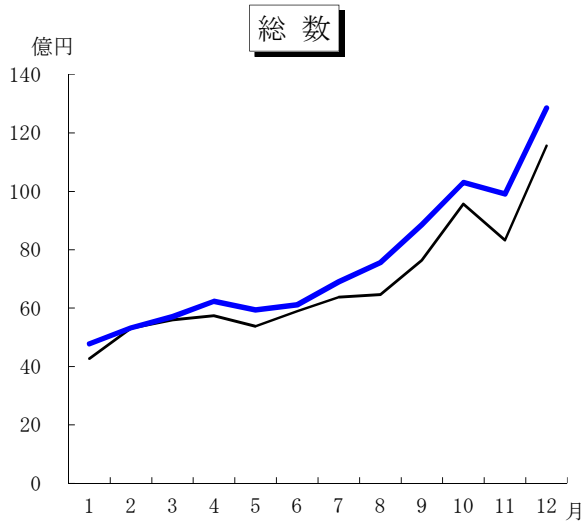


## 第5図 水産物の月別取扱金額推移

— 7年  
— 6年



月 別 取 扱 金 額

(単位：百万円)

区 分		月平均	1	2	3	4	5	6	7	8	9	10	11	12
総 数	R 5	6,646	4,468	4,980	6,179	5,385	5,700	6,298	6,202	5,760	7,606	8,783	7,793	10,603
	R 6	6,844	4,272	5,310	5,594	5,740	5,377	5,890	6,381	6,464	7,634	9,572	8,328	11,563
	R 7	7,539	4,775	5,320	5,707	6,229	5,936	6,109	6,905	7,565	8,856	10,303	9,908	12,857
鮮介 魚類	R 5	2,808	2,007	2,298	2,528	2,276	2,298	2,532	2,449	2,429	3,948	4,668	2,813	3,453
	R 6	2,924	2,004	2,492	2,540	2,472	2,258	2,441	2,367	2,628	3,793	5,153	3,288	3,651
	R 7	2,923	2,312	2,377	2,458	2,540	2,470	2,414	2,338	2,740	3,923	4,320	3,303	3,877
冷魚 介凍類	R 5	2,249	1,385	1,514	2,264	1,793	2,075	2,242	2,158	1,955	2,227	2,425	2,877	4,074
	R 6	2,374	1,281	1,608	1,798	1,948	1,853	2,098	2,388	2,423	2,447	2,733	3,123	4,787
	R 7	2,943	1,426	1,795	1,962	2,268	2,090	2,407	2,833	3,245	3,177	3,897	4,372	5,849
加品 工類	R 5	1,589	1,076	1,168	1,387	1,316	1,327	1,524	1,595	1,376	1,431	1,690	2,103	3,076
	R 6	1,546	987	1,210	1,256	1,320	1,266	1,351	1,626	1,413	1,394	1,686	1,917	3,125
	R 7	1,673	1,037	1,148	1,287	1,421	1,376	1,288	1,734	1,580	1,756	2,086	2,233	3,131